



Model E4: 4-port temperature monitor

ONE-YEAR LIMITED WARRANTY

FEATURES

- Ethernet connectivity
- 0.5°F accuracy
- Internal web server
- Monitor up to 4 temperature locations
- Supported by many NMS (Network Management Software) applications
- Mounting flanges
- °F or °C units
- Low cost, small, light-weight

OVERVIEW

The Model E4 Series of IT Temperature Monitors are now available. The IT Temperature Monitor connects directly to your network via an Ethernet hub or switch offering a unique temperature logging solution. Its list of features include:

1. **Ethernet connectivity:** Simply setup the units IP Address, Netmask and Gateway and begin collecting temperature data.
2. **Internal Web Server:** The TempTrax Model E Series has a built-in web server...listening on TCP/IP Port 80 for requests to display the current temperature conditions.

3. **Simple protocol...** for retrieving temperature data for users wishing to write their own interface.

4. **Various Software Options:**

Custom Applications

EMS (www.sensatronics.com)

TempAlert (www.tempealert.com)

NMS (Network Management Software) Plugins

Intellipool (www.intellipool.com)

IP Sentry (www.ipsentry.com)

Nagios (www.nagios.org)

Big Brother (www.quest.com)

5. **High Accuracy:** 0.5°F from -20°F to +120°F
1.5°F from -40°F to +140°F

TECHNICAL SPECIFICATIONS

Operating Range:	-40°F to 140°F
Resolution:	0.1°F
Accuracy:	+/- 0.5°F (-20°F to +120°F) +/- 1.5°F (-40°F to +140°F)
Measurement Interval:	8 seconds
Units Selectable:	°F, °C
Power supply:	9VDC @ 250mA
Exterior Dimensions:	4 1/4" x 3 1/4" x 0.75"
Shipping weight:	3 lbs. w/cables
Probe:	Standard (50") or Heavy Duty (75") <i>Longer lengths available</i>
Computer Interface:	RS232C (25-pin female D connector)

CONTACT INFORMATION

Phone #'s:

Phone: (603) 224-0167

Fax: (603) 224-2401

Website: www.sensatronics.com

Email:

Sales: sales@sensatronics.com

Support: support@sensatronics.com



Model E16: 16-port temperature monitor

FEATURES

- Ethernet connectivity
- 0.5°F accuracy
- Internal web server
- Monitor up to 16 temperature locations
- Supported by many NMS (Network Management Software) applications
- Mounting flanges
- °F or °C units
- Low cost, small, light-weight

ONE-YEAR LIMITED WARRANTY

OVERVIEW

The Model E Series of IT Temperature Monitors are now available. The IT Temperature Monitor connects directly to your network via an Ethernet hub or switch offering a unique temperature logging solution. Its list of features include:

1. **Ethernet connectivity:** Simply setup the units IP Address, Netmask and Gateway and begin collecting temperature data.
2. **Internal Web Server:** The TempTrax Model E Series has a built-in web server...listening on TCP/IP Port 80 for requests to display the current temperature conditions.

3. **Simple protocol...** for retrieving temperature data for users wishing to write their own interface.
4. **Various Software Options:**
 - Custom Applications
 - EMS (www.sensatronics.com)
 - TempAlert (www.tempealert.com)
 - NMS (Network Management Software) Plugins
 - Intellipool (www.intellipool.com)
 - IP Sentry (www.ipsentry.com)
 - Nagios (www.nagios.org)
 - Big Brother (www.quest.com)
5. **High Accuracy:** 0.5°F from -20°F to +120°F
1.5°F from -40°F to +140°F

TECHNICAL SPECIFICATIONS

Operating Range:	-40°F to 140°F
Resolution:	0.1°F
Accuracy:	+/- 0.5°F (-20°F to +120°F) +/- 1.5°F (-40°F to +140°F)
Measurement Interval:	8 seconds
Units Selectable:	°F, °C
Power supply:	9VDC @ 250mA
Exterior Dimensions:	4 1/4" x 3 1/4" x 0.75"
Shipping weight:	3 lbs. w/cables
Probe:	Standard (50') or Heavy Duty (75') <i>Longer lengths available</i>
Computer Interface:	RS232C (25-pin female D connector)

CONTACT INFORMATION

Phone #'s:

Phone: (603) 224-0167
Fax: (603) 224-2401

Website:

www.sensatronics.com

Email:

Sales: sales@sensatronics.com
Support: support@sensatronics.com



FEATURES

- Measure Temperatures from -40°F or -40°C to 212°F or 100°C
- Measure Humidity with accuracy of 2%
- Measure Wetness
- Monitor up to 4 temperature, humidity or wetness locations
- Supported by many NMS (Network Management Software) applications
- Mounting flanges
- °F, °C, K, R units
- Low cost, small, light-weight

Model EM-1: 4-port Temperature/Humidity and Wetness Monitor

ONE-YEAR LIMITED WARRANTY

OVERVIEW

The Model EM1 Series of Environmental Monitors are now available. The Environmental Monitor connects directly to your network via an Ethernet hub or switch offering a unique environmental logging solution. Its list of features include:

1. **Ethernet connectivity:** Simply setup the units IP Address, Netmask and Gateway and begin collecting environmental data or let the unit dynamically configure the network settings for you. Also supports DHCP
2. **Internal Web Server:** A built-in web server ...listening on TCP/IP Port 80 (or at a user selected port) for requests to display the current environmental conditions.

3. **Simple protocol...** for retrieving environmental data for users wishing to write their own interface.

4. **Various Software Options:** NMS (Network Management Software) that are SNMP based

5. **High Accuracy:**

Temperature	0.5°F from -20°F to +120°F
	1.5°F from -40°F to +212°F
	0.3°C from -3.0°C to +50°C
	0.8°C from -40°C to +100°C
Humidity	2% RH from 5% to 95% RH
	Non condensing
Wetness	1 – 100 scale of wetness

TECHNICAL SPECIFICATIONS

Operating Range:	-40°F to 122°F -40°C to +50°C
Resolution:	0.1°F, °C, °K
Probe Accuracy:	0.5°F from -20°F to +120°F 1.5°F from -40°F to +212°F 0.3°C from -3°C to +50°C 0.8°C from -40°C to +100°C
Measurement Interval:	3 seconds
Units Selectable:	°F, °C, K, R
Power supply:	9VDC @ 250mA
Exterior Dimensions:	4 1/4" x 3 1/4" x 0.75 10.8cm x 8.3cm x 2cm
Shipping weight:	3 lbs., 1.3kg w/cables
Probe:	Heavy Duty (75'), (22.86m) Longer lengths available Wetness probes in 10' and 75' lengths
Computer Interface:	RS232C (25-pin female D connector)

CONTACT INFORMATION

Phone #'s:

Phone: (603) 224-0167
Fax: (603) 224-2401

Website: www.sensatronics.com

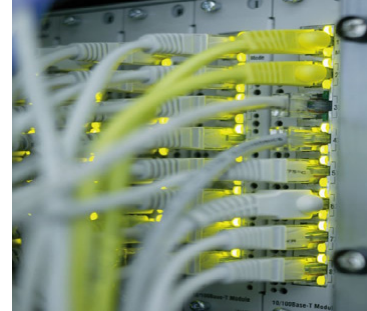
Email:

Sales: sales@sensatronics.com
Support: support@sensatronics.com

Computer Room and Data Center Solutions

Sensatronics provides a variety of products to help you protect your IT assets. Anyone who has ever experienced a catastrophic computer room event knows that the investment in a Sensatronics solution far outweighs the costs associated with interrupted business and dissatisfied customers.

Choose from our multi-port temperature monitors to ensure things stay cool, or opt for our multifunctional environmental device for more extensive monitoring of water leaks and damaging humidity levels.



Our Hardware

All of our monitors are available with Ethernet connectivity and include an internal Web server. Depending upon the model, the devices can accommodate up to 16 probes from a single monitor. All models are capable of displaying temperature results in Fahrenheit or Celsius, and all are within 0.5°F accuracy. The monitors' exterior dimensions measure 4 ¼" x 3 ¼" x ¾" (10.8cm x 8.3cm x 2cm) and weigh about 3 pounds each.

Our standard temperature monitors measure temperatures from -40°F (-40°C) to +140°F (+60°C). For deep-freeze requirements, we also carry a line of cryogenic monitors and probes that measure down to 139°F (-95°C). And for those requiring temperature, humidity and leak detection, we also carry an environmental monitoring device that measures all three conditions.

Probes are priced separately, allowing you to purchase just what you need according to the device(s) you are monitoring. Our probes come in standard and heavy duty varieties of varying lengths. Custom lengths are also available.

Our Software

Our open architecture allows us to run on any operating system through a variety of vendor software programs making us adaptable to new or current customer environments. Be sure to visit our Web site to review the latest list of compatible Network Management Software applications.

Our Service and Support

Our highly skilled staff provides extensive online customer support throughout the life of your Sensatronics device. And as a Sensatronics customer you will be able to take advantage of the many special offers and promotions offered throughout the year.



Contact Us

If you require further assistance, please call us at (800) 633-1033 to contact a Sales Specialist.

The Technical Details

Due to the simplicity of our design, users can install and configure Sensatronics units themselves within minutes. It takes just a few days from order to install to experience the relief of knowing you can avoid potentially disastrous events.

We offer two types of devices to meet a variety of monitoring needs – temperature only and environmental which monitors temperature, humidity and leak detection.

EM1 Environmental Monitor	E4/E16 Temperature Monitors
	
<ul style="list-style-type: none"> • Monitors temperature, relative humidity and leak detection • Measure temperatures from -40°F to +176°F, humidity from 0% to 100%, and leak detection on a scale from 1 to 100 • Up to four ports for each condition 	<ul style="list-style-type: none"> • Standard temperature monitoring • Measures temperatures from -40°F to +140°F • Available in 4-port and 16-port models

All of our monitors are equipped with the following features

- Network connection via Ethernet hub or switch
- Internal Web server
- Average of 5-second measurement intervals
- Fahrenheit or Celsius unit
- RS232C (25-pin female D connector)
- Power supply of 9VDC@250mA
- Within 0.5F° accuracy
- Mounting flanges
- Light weight – about 3 lbs
- Compact size – 4 ¼” x 3 ¼” x ¾”

Probes

Probes are priced separately to allow you to purchase just what you need according to the number of devices and/or locations that you are monitoring. Along with our standard temperature probes, we have combination temperature/relative humidity and specialty wetness probes. Our probes come in standard and heavy duty varieties of varying lengths. Custom lengths are also available.



Contact Us

Please call us at (800) 633-1033 for further information, or to speak with a Technical Support Specialist.